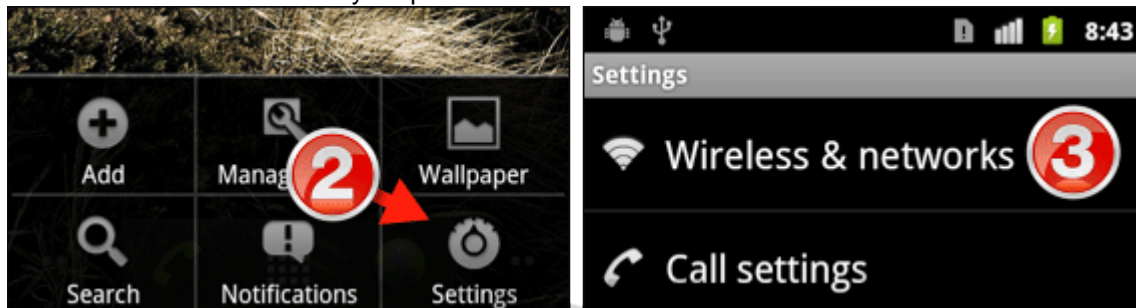


Connect Android Phone to Wireless

In order for your Android phone to connect to [wireless networks](#) you will need to turn on the Wi-Fi radio and connect to the wireless network of your choice.

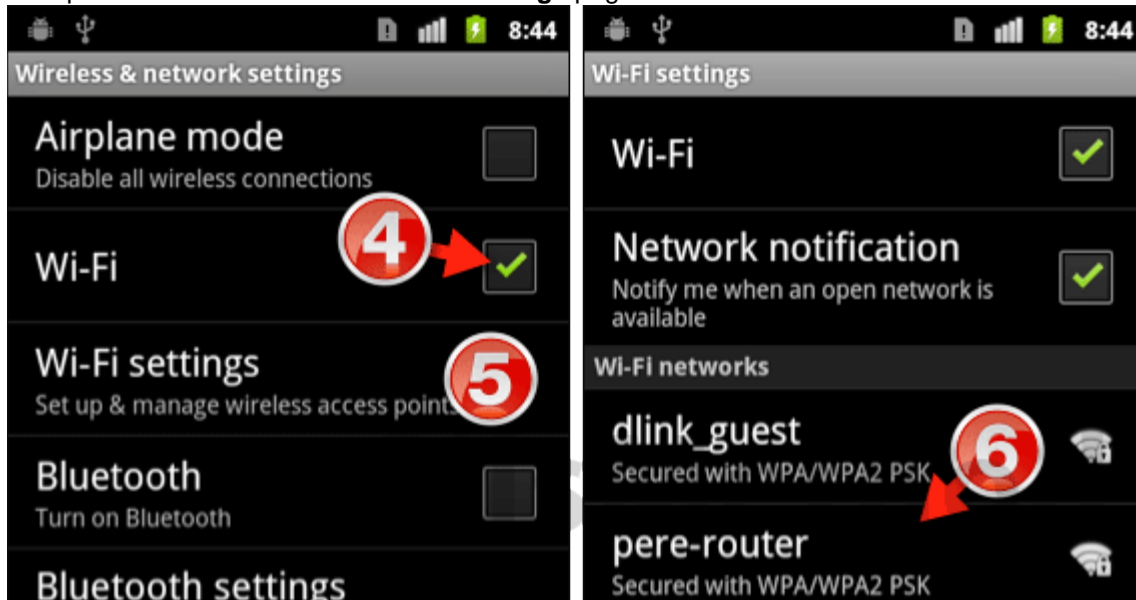
Unless the wireless network is open, that is, it has no password. You will need to specify which wireless network to connect to and enter your credentials.

1. Press the **Menu** button on your phone while on the **Home** screen.



2. Tap **Settings** when the menu appears.

3. Tap **Wireless & networks** from the **Settings** page.

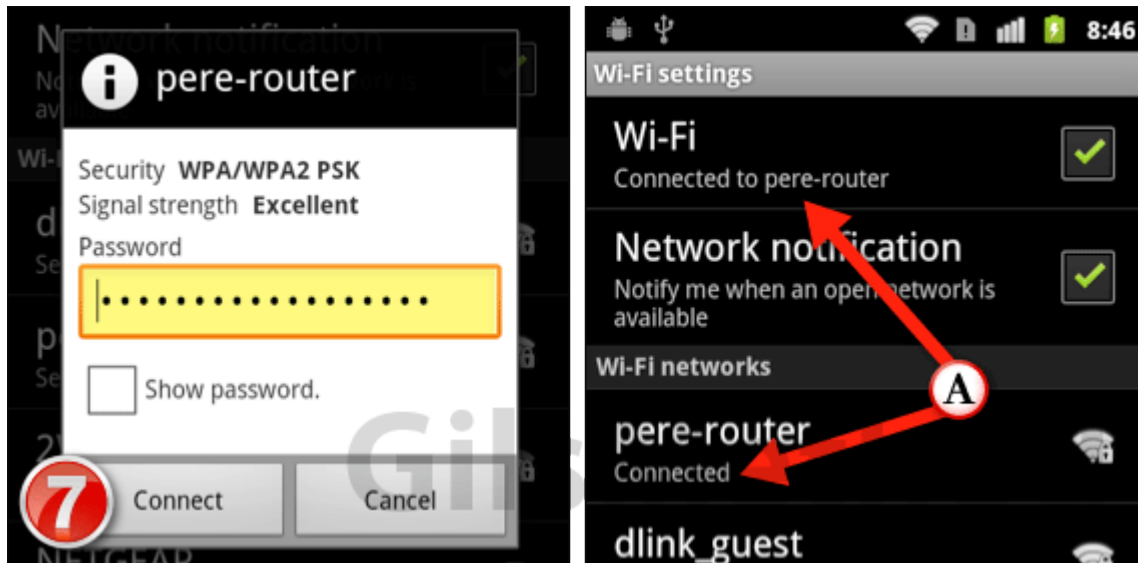


4. Tap the **Wi-Fi** checkbox to enable the Wi-Fi radio.

5. Tap **Wi-Fi Settings** to connect to a wireless network.

6. Tap the wireless network you wish to connect to.

Note: If the wireless network is secured you will need to provide a password to connect.



7. Enter the password for the wireless network you are connected to and tap **Connect**.

A. Once you are connected to the wireless network the status will change to **Connected to "router name"**.